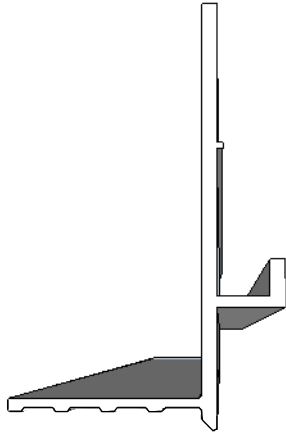


# Perfect Fit Mud In Hanger Instructions

Congratulations on your purchase of a specialty system from DEL Motorized Solutions.  
If you have any questions, please call technical support at 1-866-446-6867  
or email us at [info@motorizedsolutions.com](mailto:info@motorizedsolutions.com)

# PerfectFit

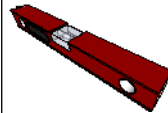


## Important Notes - Please Read Before Installing

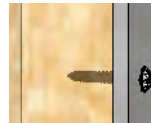


### CAUTION: RISK OF FALLING OBJECTS

Securely install the system per the mounting instructions. Failure to do so could result in injury.



All mounting surfaces must be level.



Perfect Fit and hardware are to be anchored into wood blocking. If wood blocking is not available, you must use appropriate fasteners (not included) to support the weight of the system and load.



Pre-drill all holes with the appropriate size bit.

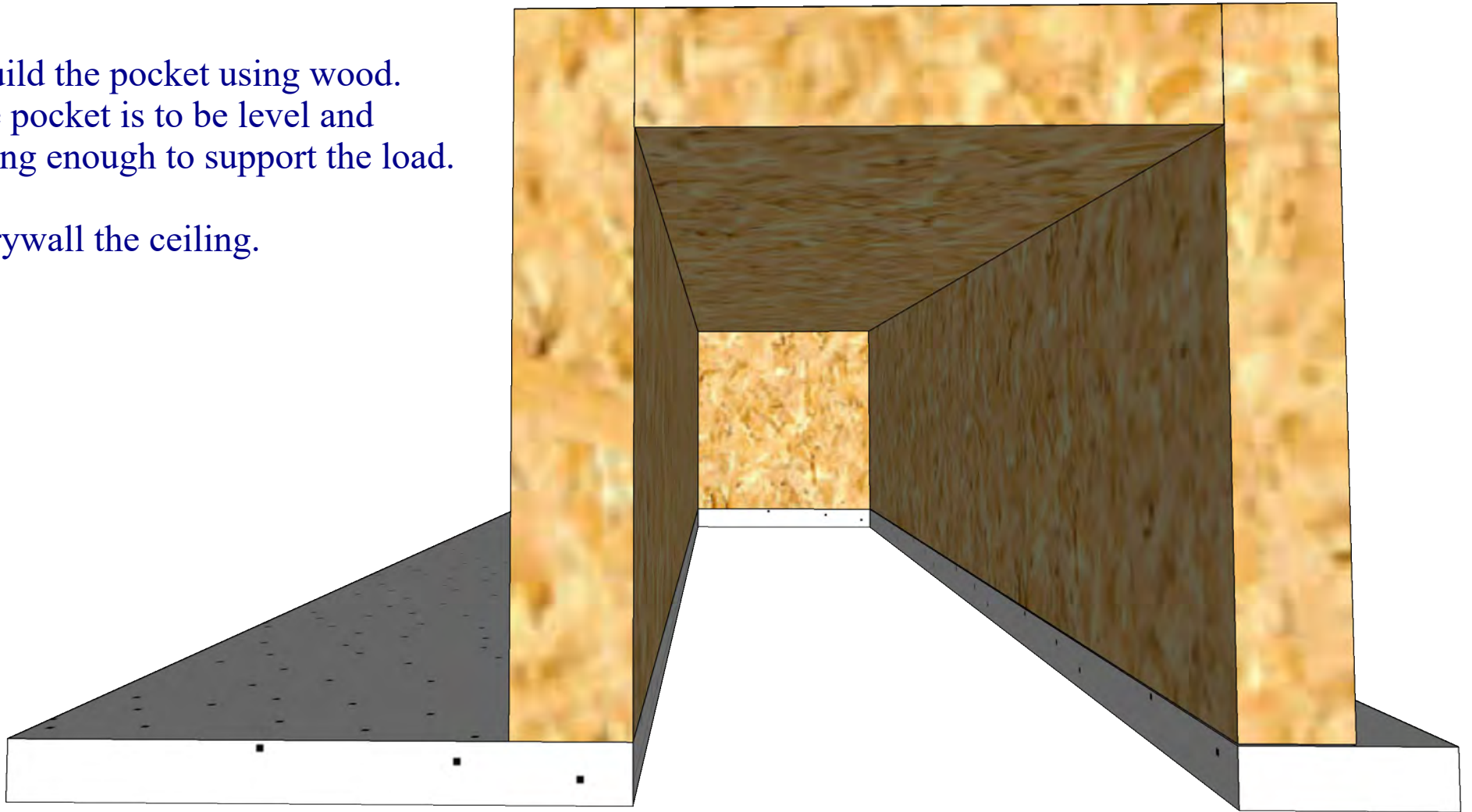
### TOOLS REQUIRED

Pencil, Tape Measure, Powered Screwdriver, Drill, Level, Rasp, Drill bits.

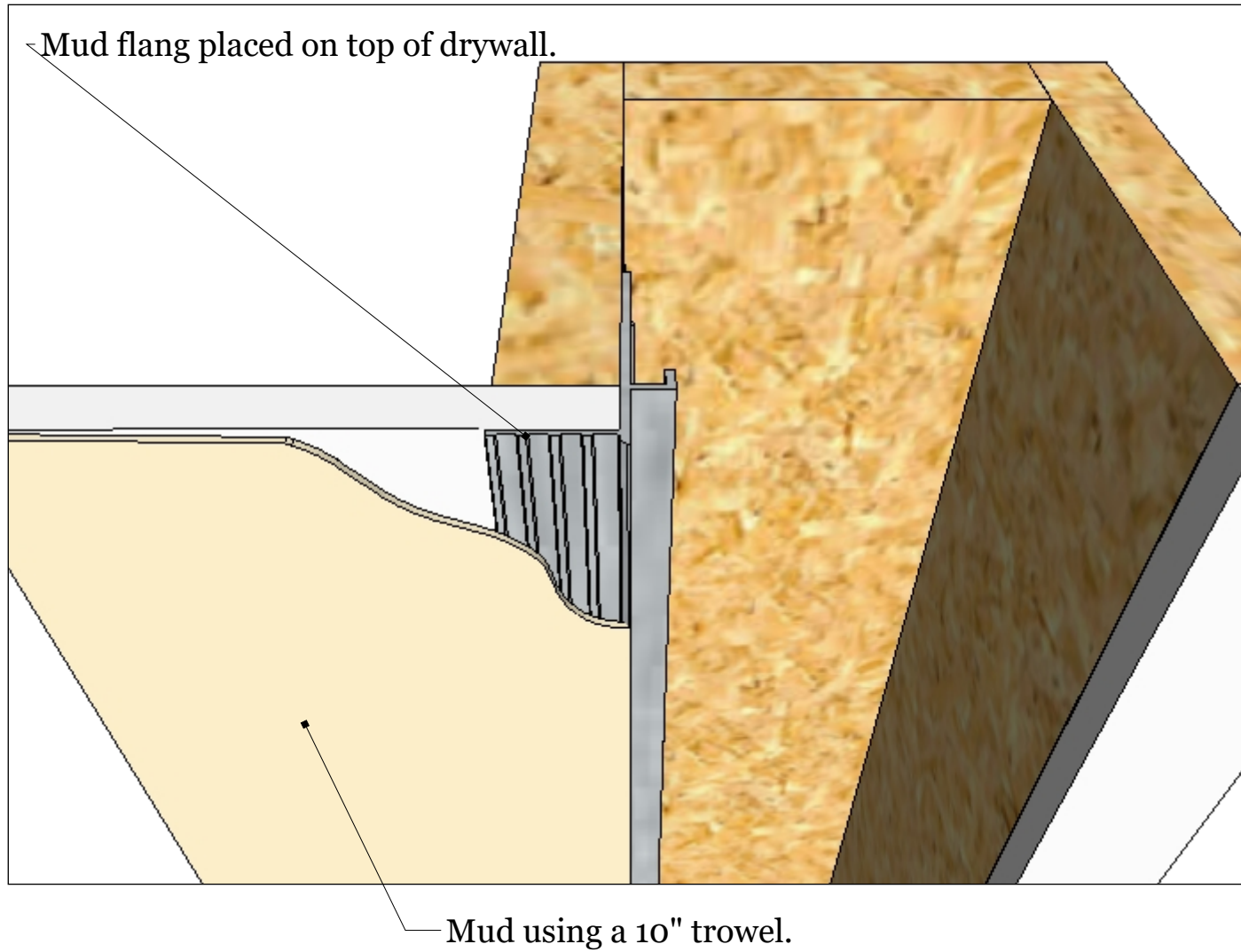
## Step 1. Construct Pocket and Ceiling

\*Build the pocket using wood.  
The pocket is to be level and strong enough to support the load.

\*Drywall the ceiling.

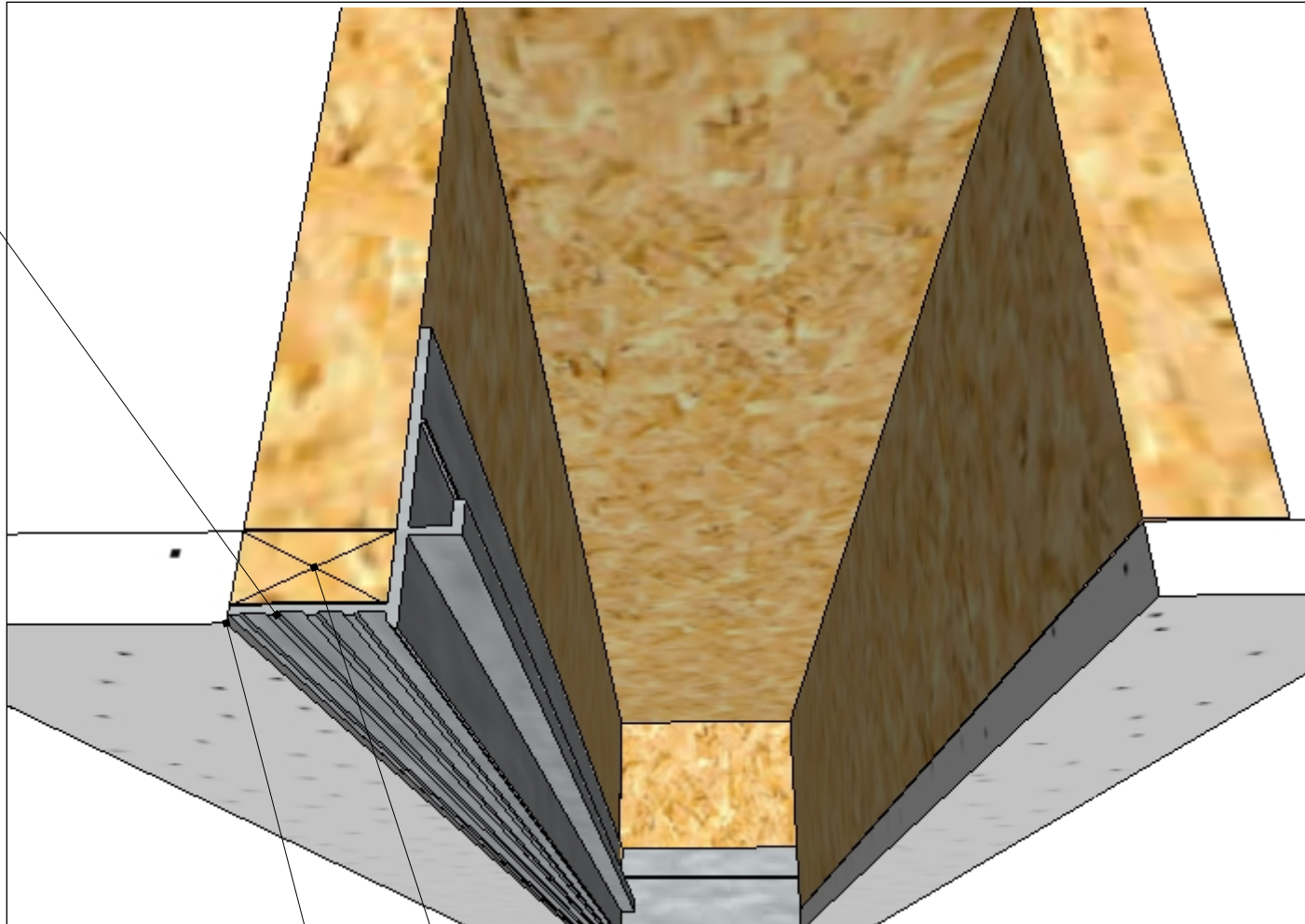


## Step 2. Option 1



## Step 2. Option 2

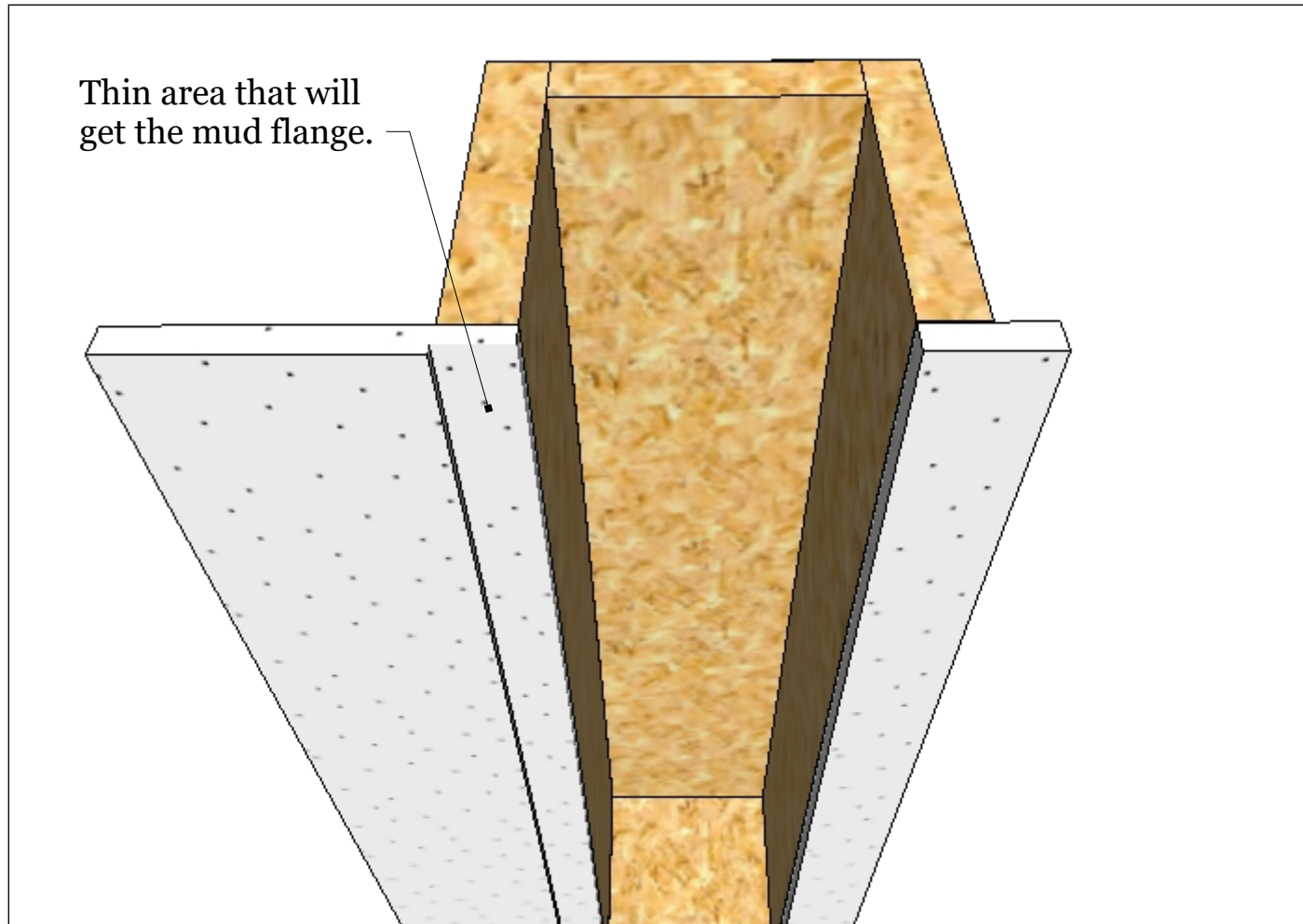
Flange level with drywall plane.



Drywall butt to mud flange.

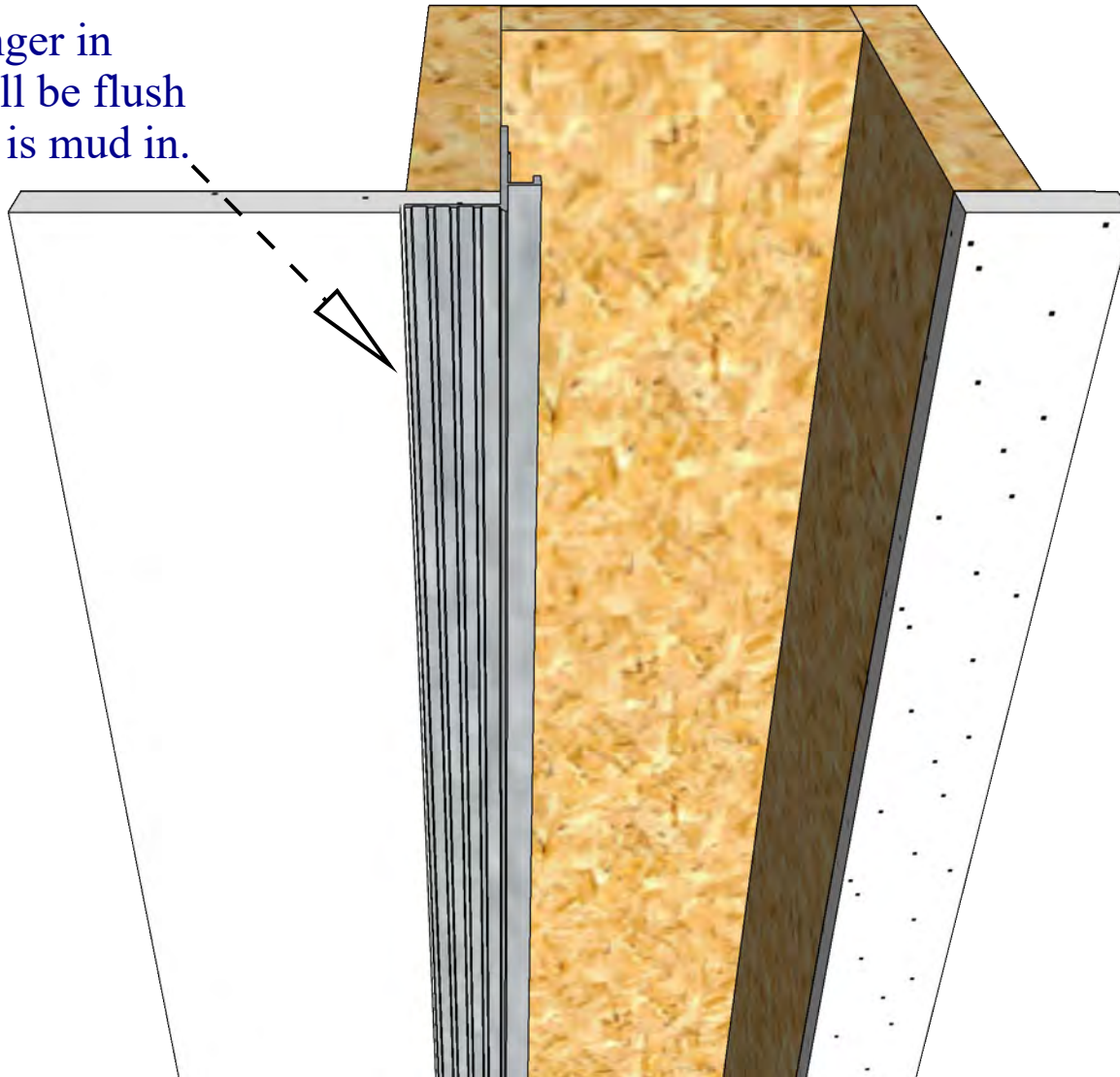
Blocking spaced along length to support mud flanges.

## Step 2. Option 3



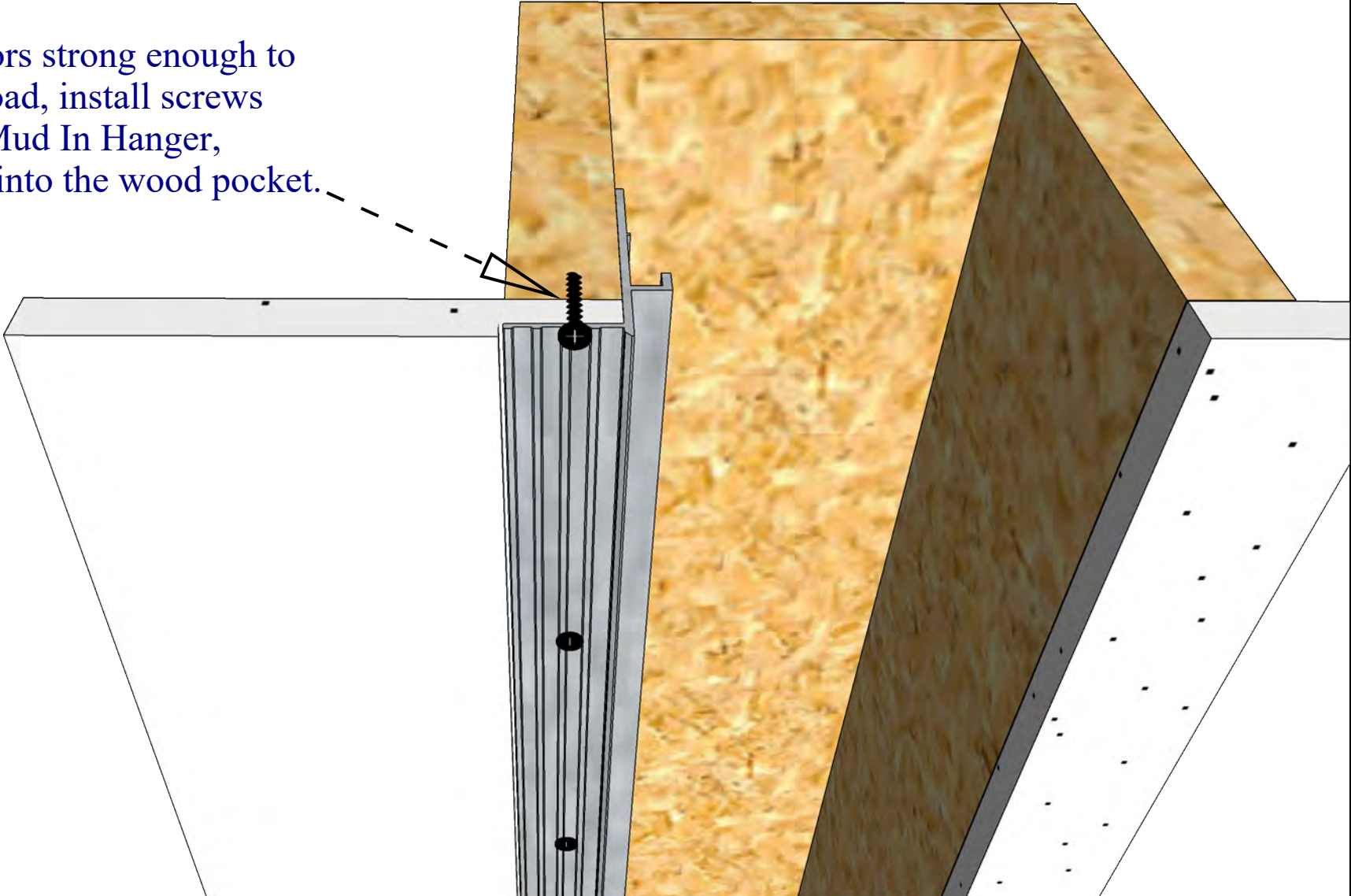
### Step 3. Insert Mud In Hanger

\*Insert the Mud In Hanger in place and confirm it will be flush with the ceiling once it is mud in.



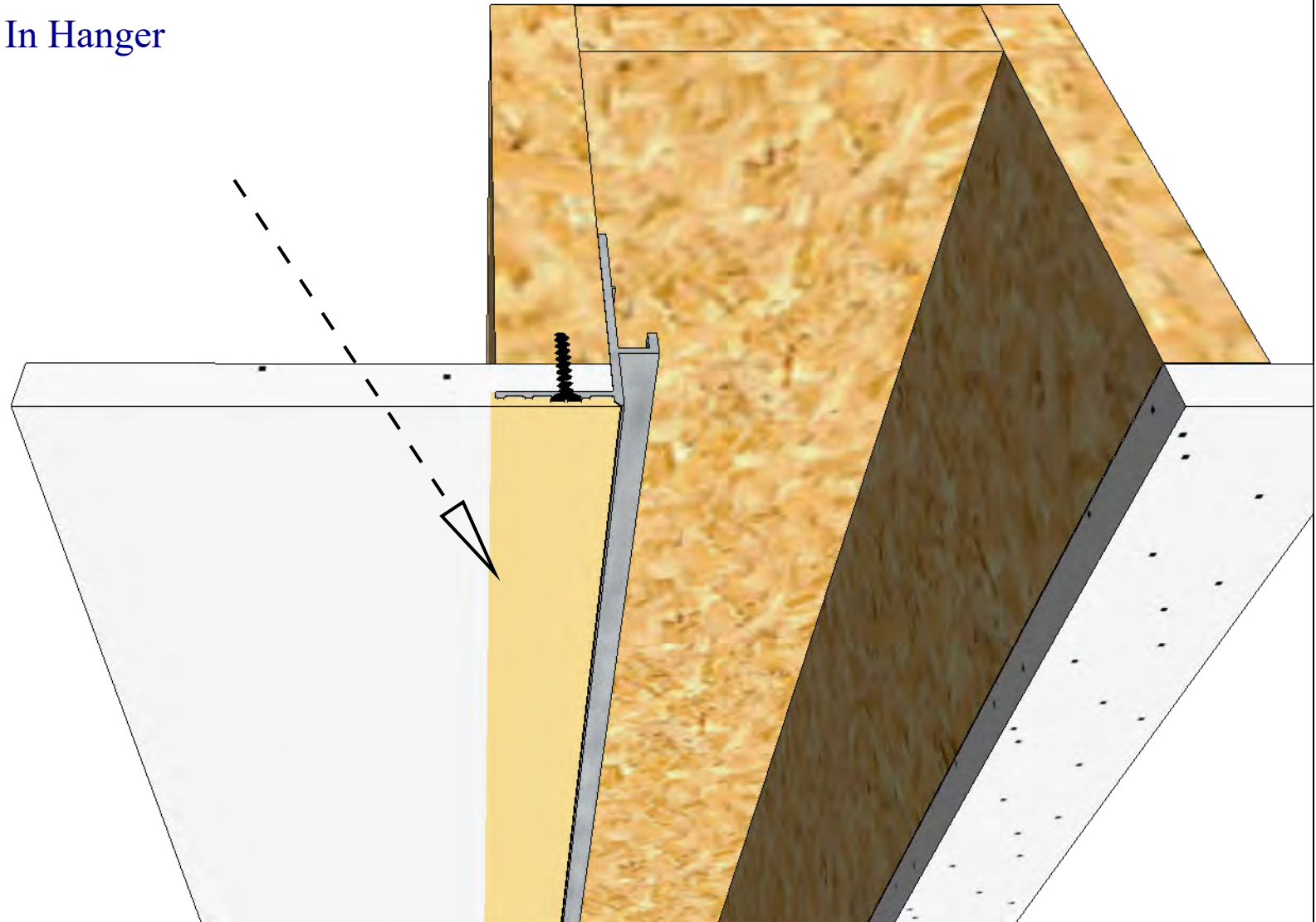
# Step 4. Install Anchors

\*Using anchors strong enough to support the load, install screws through the Mud In Hanger, drywall, and into the wood pocket.



## Step 5. Preparing The Drywall

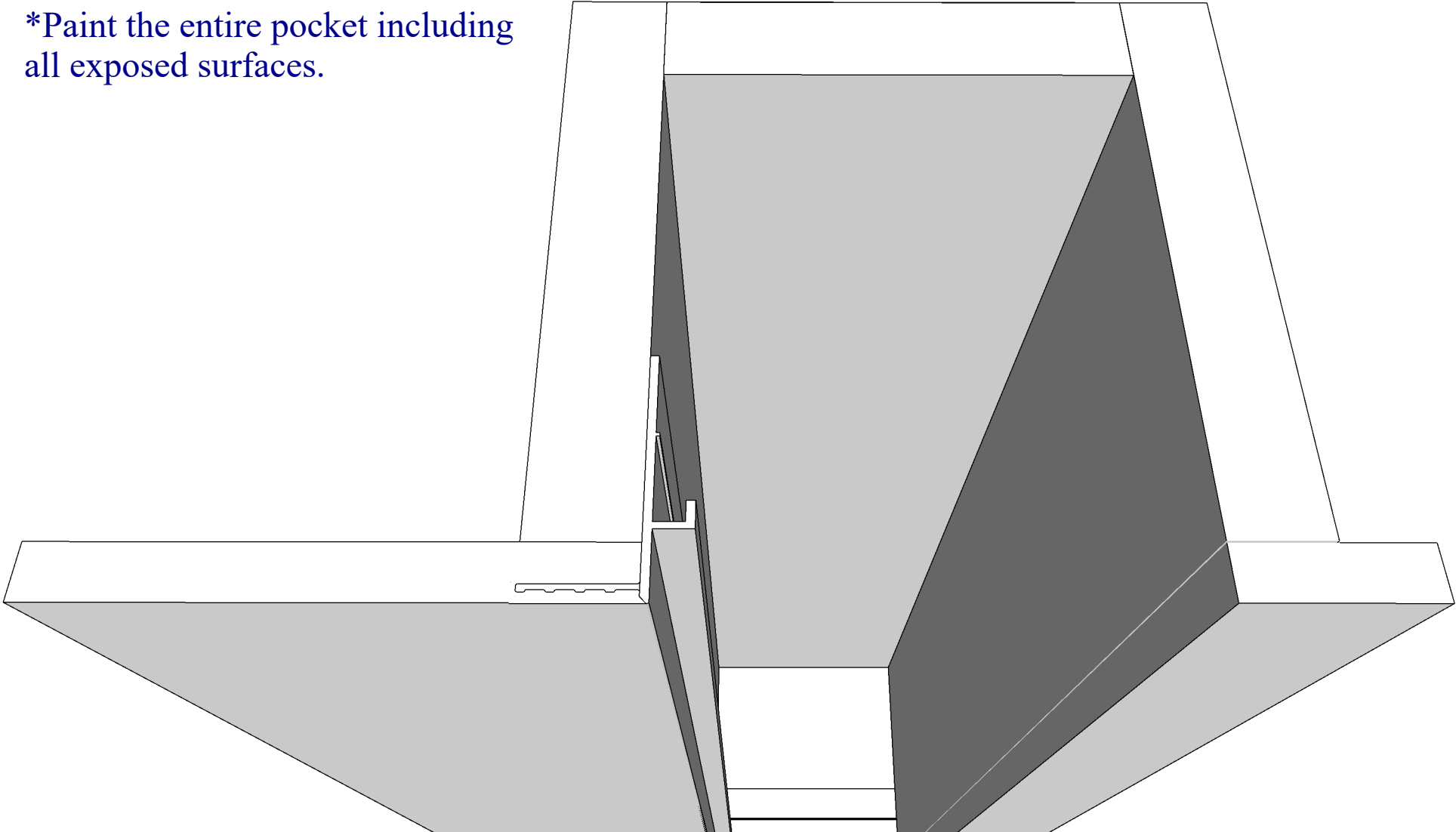
\*Mud over the Mud In Hanger





# Step 6. Finish Surfaces

\*Paint the entire pocket including all exposed surfaces.



## Step 7. Completion

\*Install the shade and flap.

